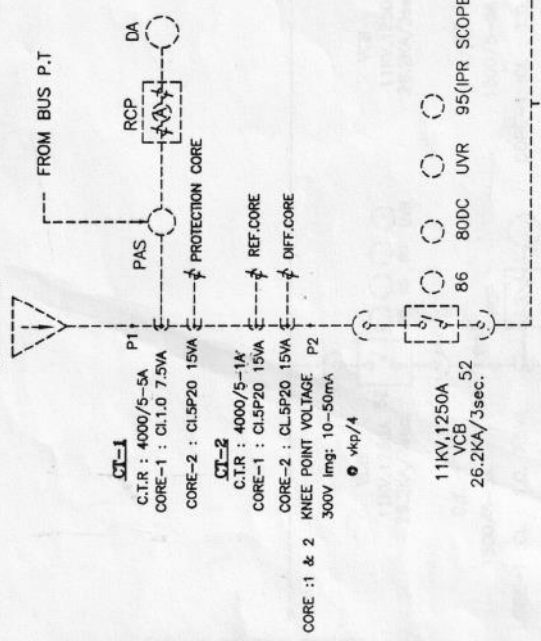


INCOMER (PANEL-1)
FROM 132/11.5KV 50MVA TRANSFORMER
2x300 + 1x400sq.mm

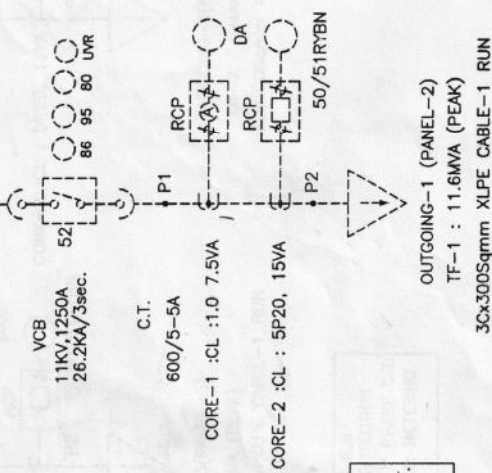


CT-1
C.T.R : 4000/5-5A
CORE-1 : CL:1.0 7.5VA
CORE-2 : CL:5P20 15VA

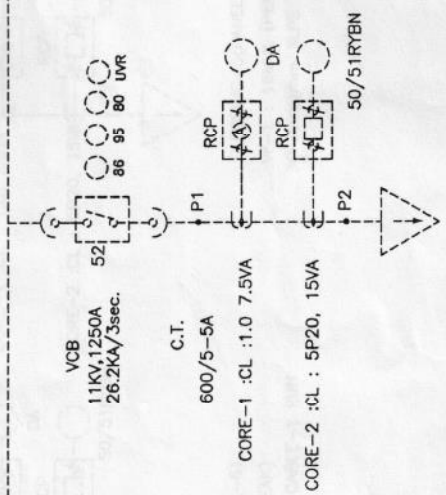
CT-2
C.T.R : 4000/5-1A
CORE-1 : CL:5P20 15VA
CORE-2 : CL:5P20 15VA

300V Imp: 10-50mA
v_{kp}/4

11KV,1250A
VCB 52
26.2KA/3sec.

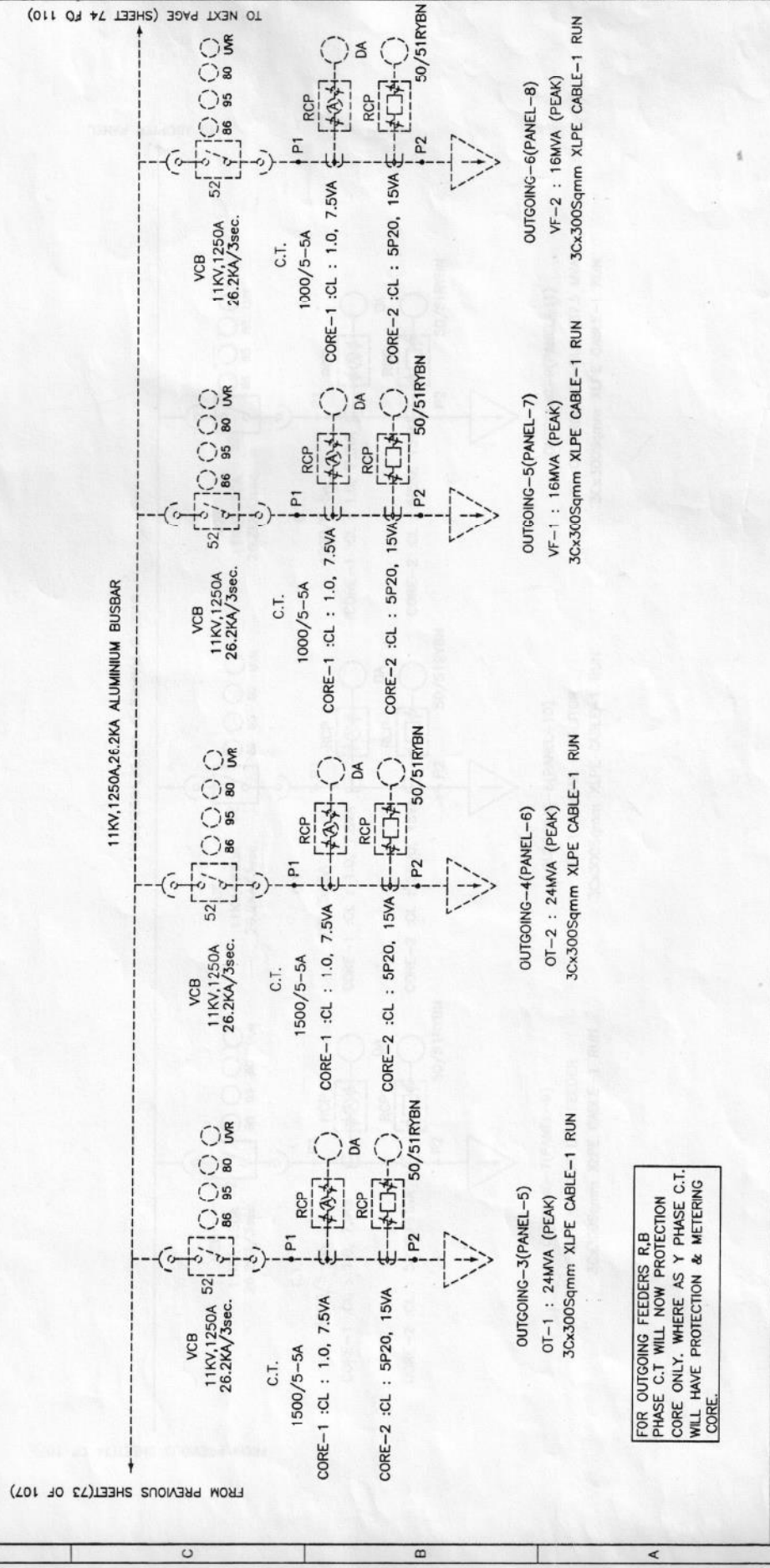


FOR OUTGOING FEEDERS R,B
PHASE C.T WILL NOW PROTECTION
CORE ONLY. WHERE AS Y PHASE C.T.
WILL HAVE PROTECTION & METERING
CORE.



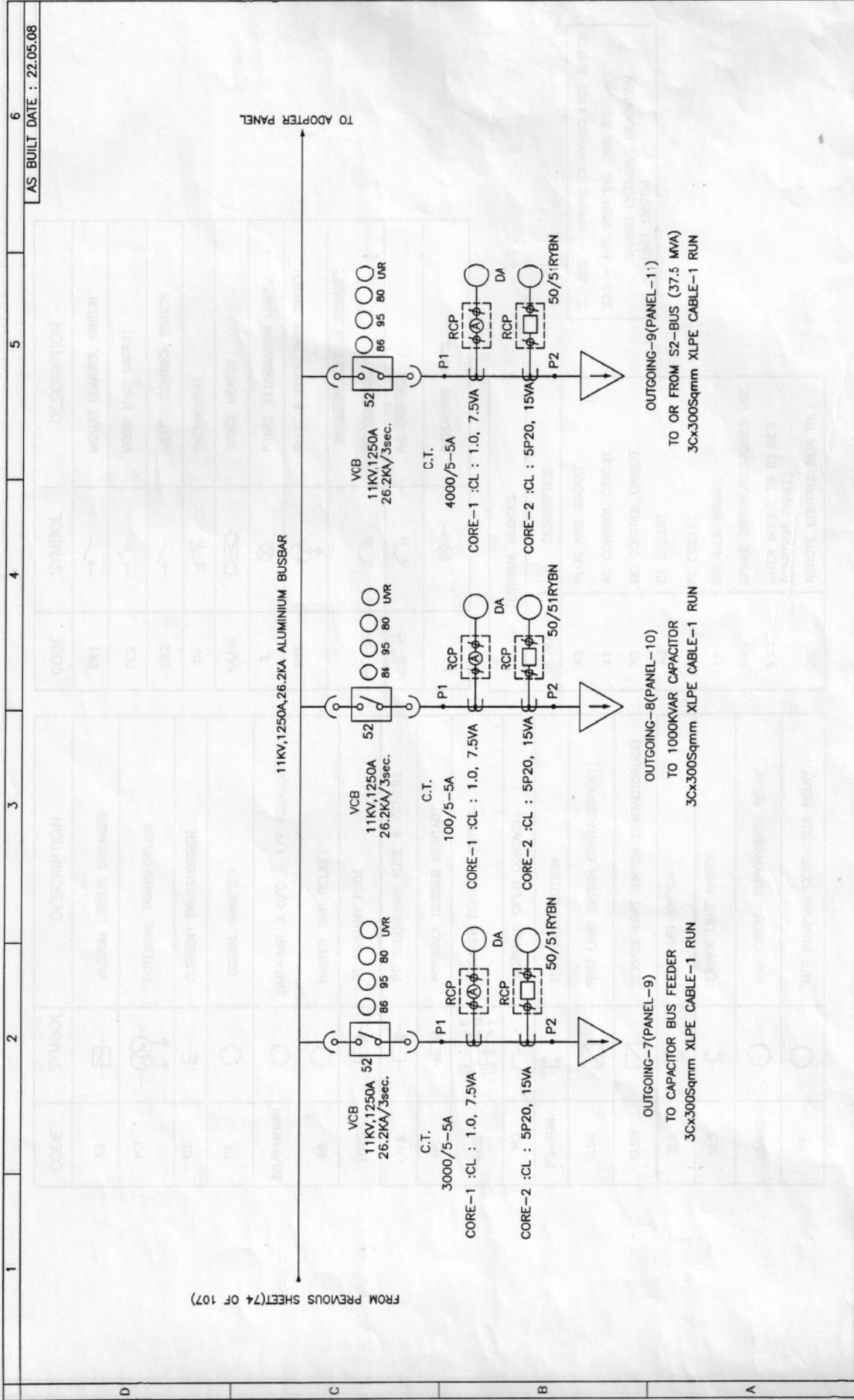
TO NEXT SHEET (74 OF 107)

ISSUE		DATE		REVISION-1		REVISION-2		DATE		QTY : 1 SET		TITLE : SINGLE LINE DIAGRAM FOR 11KV 3 PANEL VCB SWITCH BOARD				
APP	SRI	DATE	27.03.2007	REMARKS		REMARKS		DATE		DATE		DATE				
CHE	PV	DATE		REMARKS		REMARKS		DATE		DATE		DATE				
DRA	Logu	DATE		REMARKS		REMARKS		DATE		DATE		DATE				
INSTALLATION : INDOOR													CUSTOMER ID : 4371		SHEETS	
METERING													DWG NO. : MS-SLD-4371-01-RO		73 OF 107	
MEGAWIN SWITCHGEAR-P-LTD SALEM, TAMIL NADU																

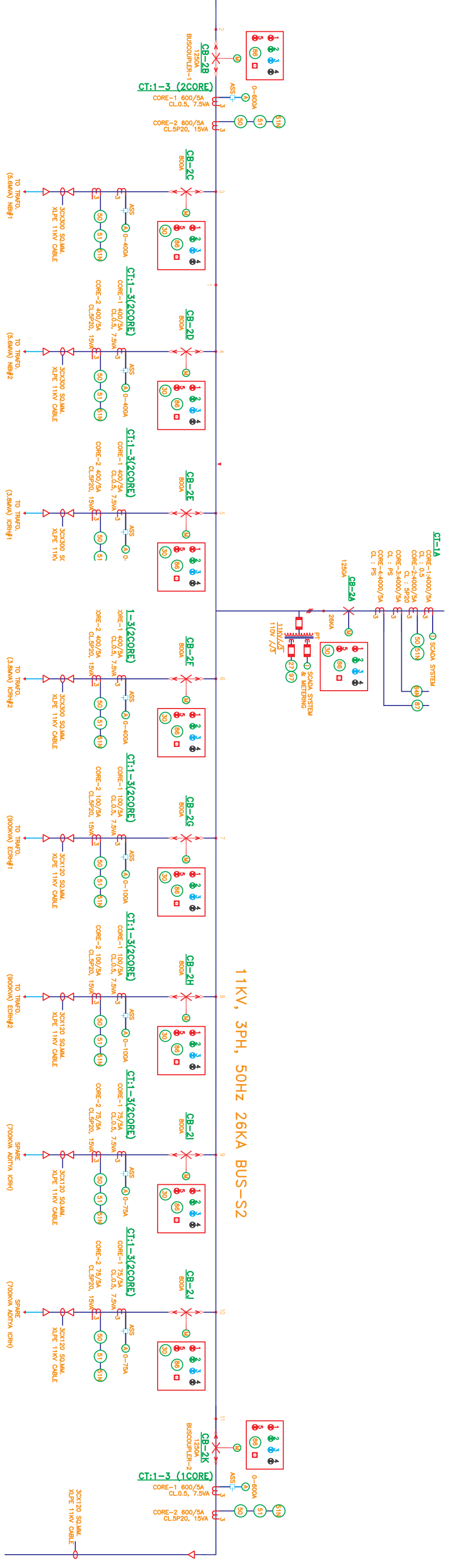


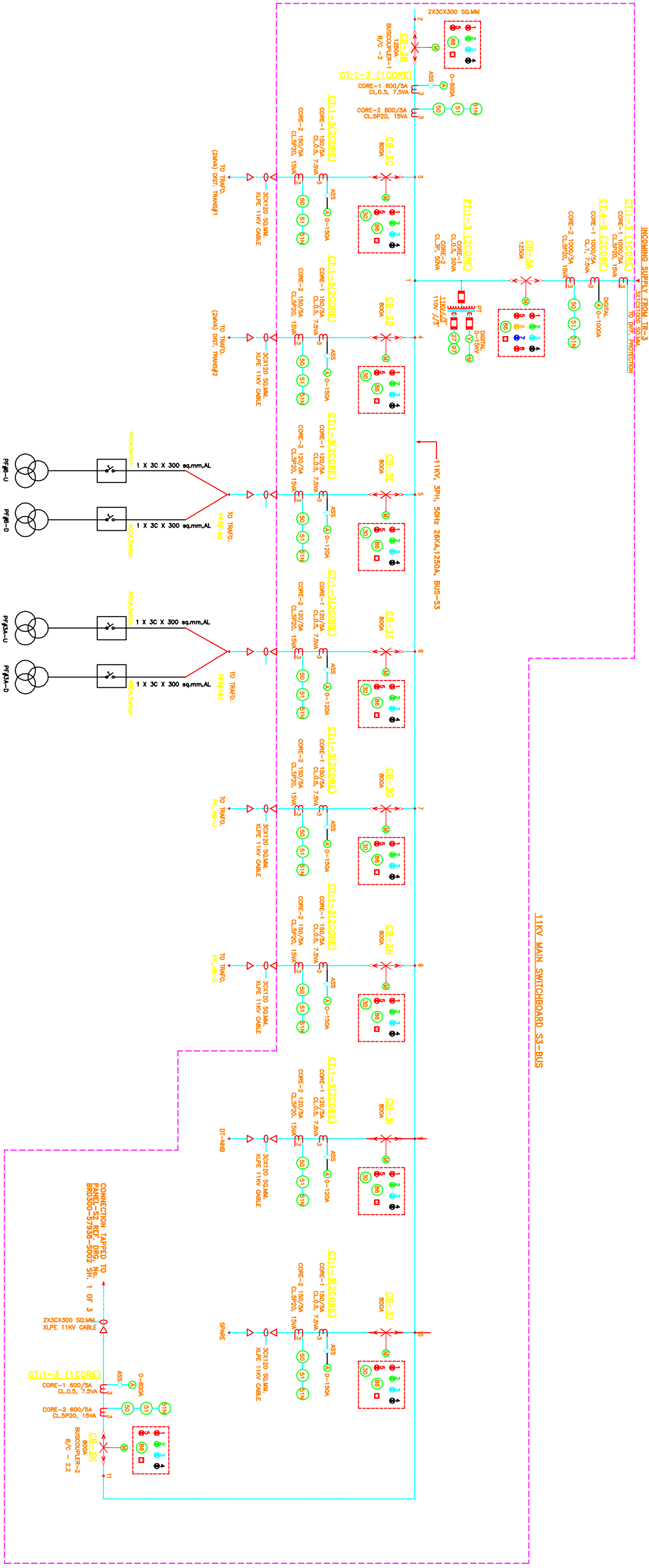
INSTALLATION : INDOOR		QTY : 1 SET		TITLE : SINGLE LINE DIAGRAM FOR 11KV 3 PANEL VCB SWITCH BOARD	
DATE	27.03.2007	DATE		CUSTOMER ID :	4371
DRA	Srinivas	REVISION-1		DWG NO. :	MS-SLD-4371-01-RO
CHE	PV	REVISION-2		MEGAWIN SWITCHGEAR-P-LTD SALEM, TAMIL NADU	
APP	SRI	REVISION-3		SHEETS	
ISSUE		REVISION-4		74 OF 107	

FOR OUTGOING FEEDERS R/B
PHASE C.T WILL NOW PROTECTION
CORE ONLY. WHERE AS Y PHASE C.T.
WILL HAVE PROTECTION & METERING
CORE.



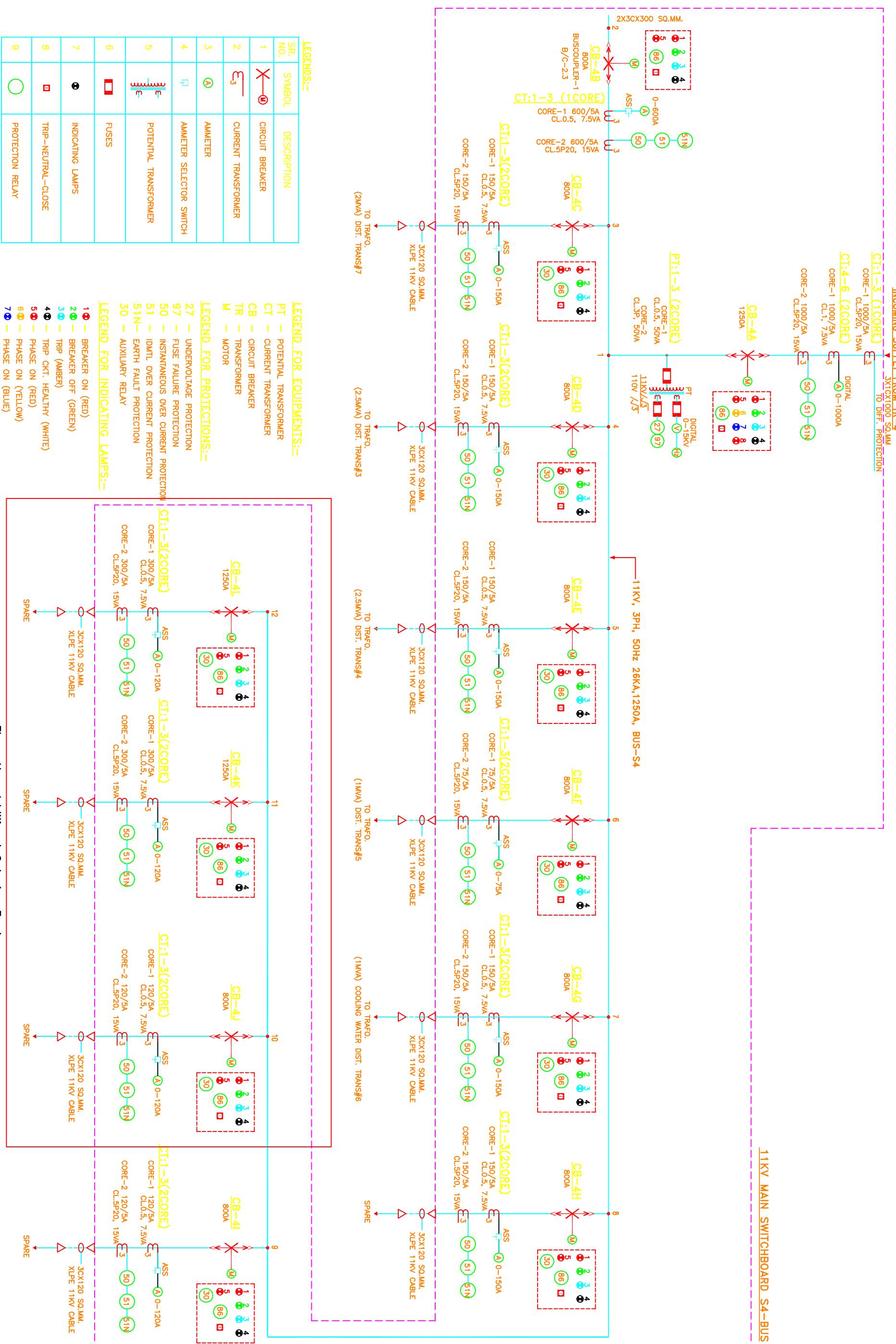
INSTALLATION : INDOOR		QTY : 1 SET		TITLE : SINGLE LINE DIAGRAM FOR 11KV 3 PANEL VCB SWITCH BOARD	
DATE	27.03.2007	DATE		CUSTOMER ID : 4371	
DRA	Logan	REVISION-1		DWG NO. : MS-SLD-4371-01-R0	
CHE	PV	REVISION-2		MEGAWIN SWITCHGEAR-P-LTD	
APP	SRI	REVISION-3		SALEM, TAMIL NADU	
ISSUE		REVISION-4		SHEETS	
				75 OF 107	





Name	Date	Amendment/Revision

The reproduction, transmission or use of this document or its contents by any person without express written authority of the Institute for Plasma Research is prohibited. All rights, including rights created by patent, grant or registration of a utility model or design, are reserved. For details of Dip. No. of other design refer Record of Dip. No.-001



LEGENDS:-

S.R. NO.	SYMBOL	DESCRIPTION
1		CIRCUIT BREAKER
2		CURRENT TRANSFORMER
3		AMMETER
4		AMMETER SELECTOR SWITCH
5		POTENTIAL TRANSFORMER
6		FUSES
7		INDICATING LAMPS
8		TRIP-NEUTRAL-CLOSE
9		PROTECTION RELAY

LEGEND FOR EQUIPMENTS:-

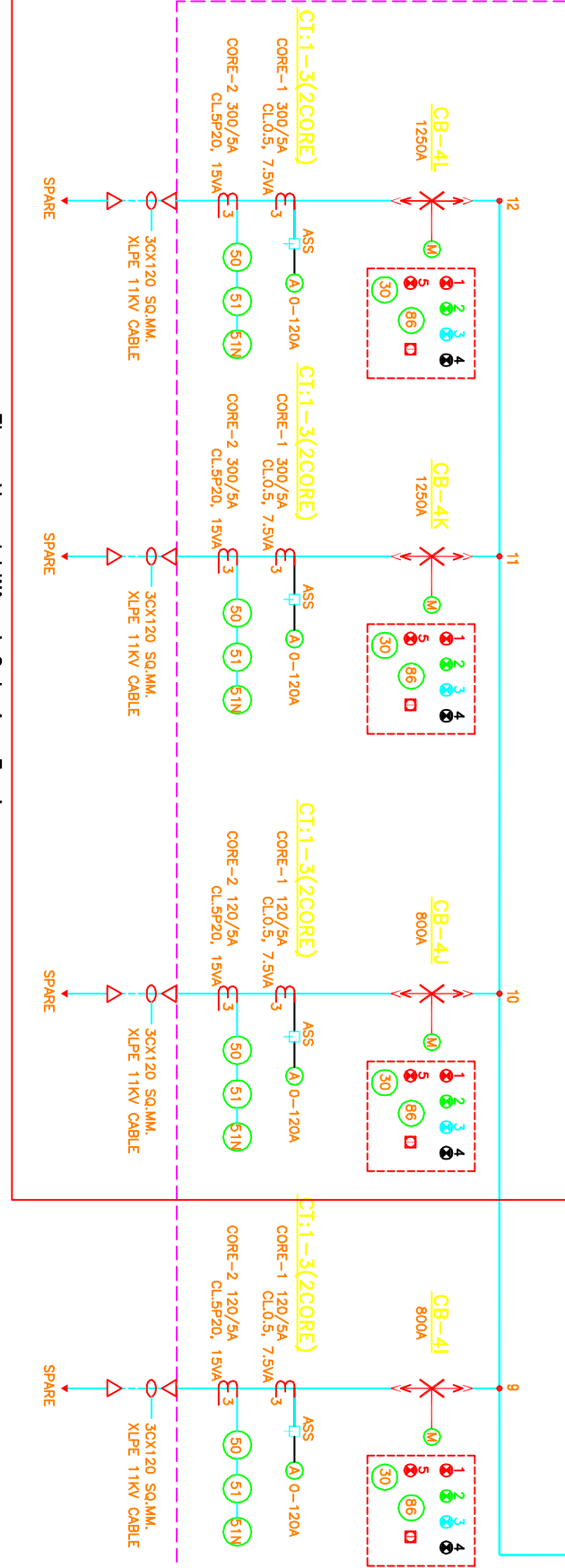
PT - POTENTIAL TRANSFORMER
 CT - CURRENT TRANSFORMER
 CB - CIRCUIT BREAKER
 TR - TRANSFORMER
 M - MOTOR

LEGEND FOR PROTECTIONS:-

27 - UNDERVOLTAGE PROTECTION
 97 - FUSE FAILURE PROTECTION
 50 - INSTANTANEOUS OVER CURRENT PROTECTION
 51 - IDMTL OVER CURRENT PROTECTION
 51N - EARTH FAULT PROTECTION
 30 - AUXILIARY RELAY

LEGEND FOR INDICATING LAMPS:-

1 - BREAKER ON (RED)
 2 - BREAKER OFF (GREEN)
 3 - TRIP (AMBER)
 4 - TRIP CKT. HEALTHY (WHITE)
 5 - PHASE ON (RED)
 6 - PHASE ON (YELLOW)
 7 - PHASE ON (BLUE)
 8 - DC SUPPLY ON (RED)



Client :- **INSTITUTE FOR PLASMA RESEARCH**

PROJECT :-

Description :- **11KV SINGLE LINE DIAGRAM PANEL-S4 EXT**

Work :-

IPR Drawing No.:

Item No.:-

Scale :-

QTY:-

Issue

Remarks

Date

Issued for

Aprd.

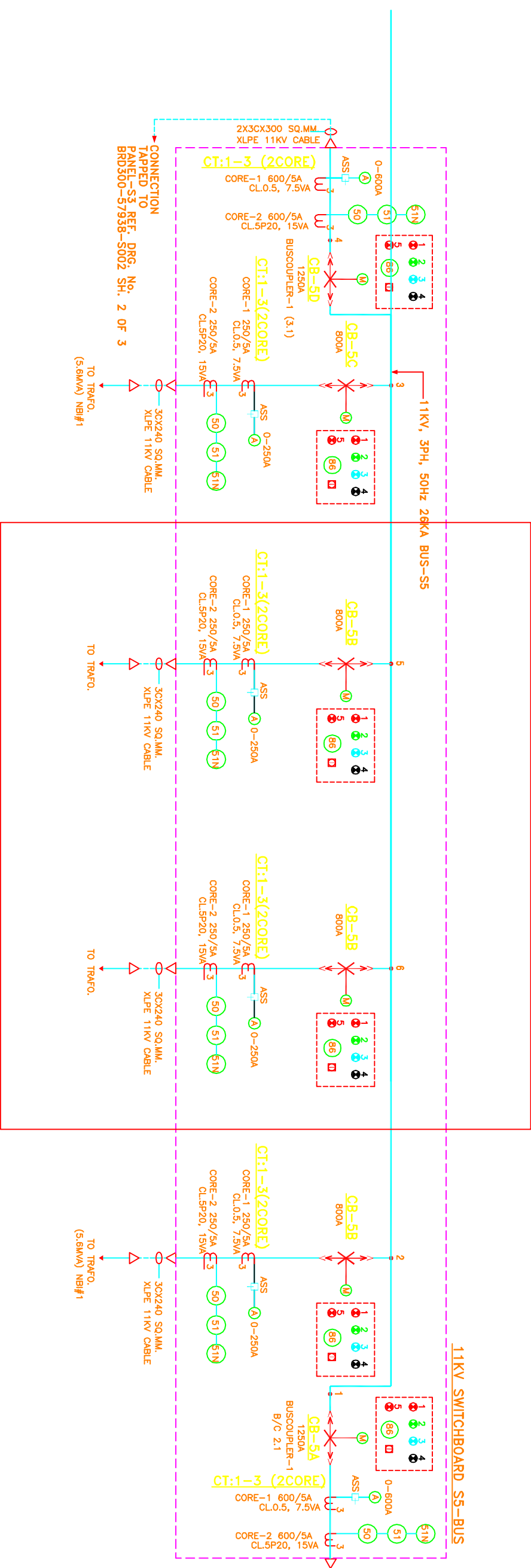
Original/ Replacement for / Replaced by :-

Sheet No.3

No. of Sh.3

Amendment/Revision	Date	Name

The reproduction, transmission or use of this document or its contents by any person without express written authority of the author is prohibited. All rights, including rights created by patent, grant or registration of a utility model or copyright, are reserved. For details of the rights of other design refer Record of Reg. No.-0001



Two Nos. Additional Outgoing Feeders

11KV SWITCHBOARD S5-BUS

INSTITUTE FOR PLASMA RESEARCH

Client :-
PROJECT :-

Description :-
Work :-
Details :- 11KV SINGLE LINE DIAGRAM FOR PANEL-S5 EXT

W.O.No. :-
Drg no. :-
Scale :-

IPR Drawing No.:

Rev. No.	Date	Chkd by	Reviewed by	Approved by

IPR'S ACCEPTANCE

Item No.:-	Scale :-
Qty:-	

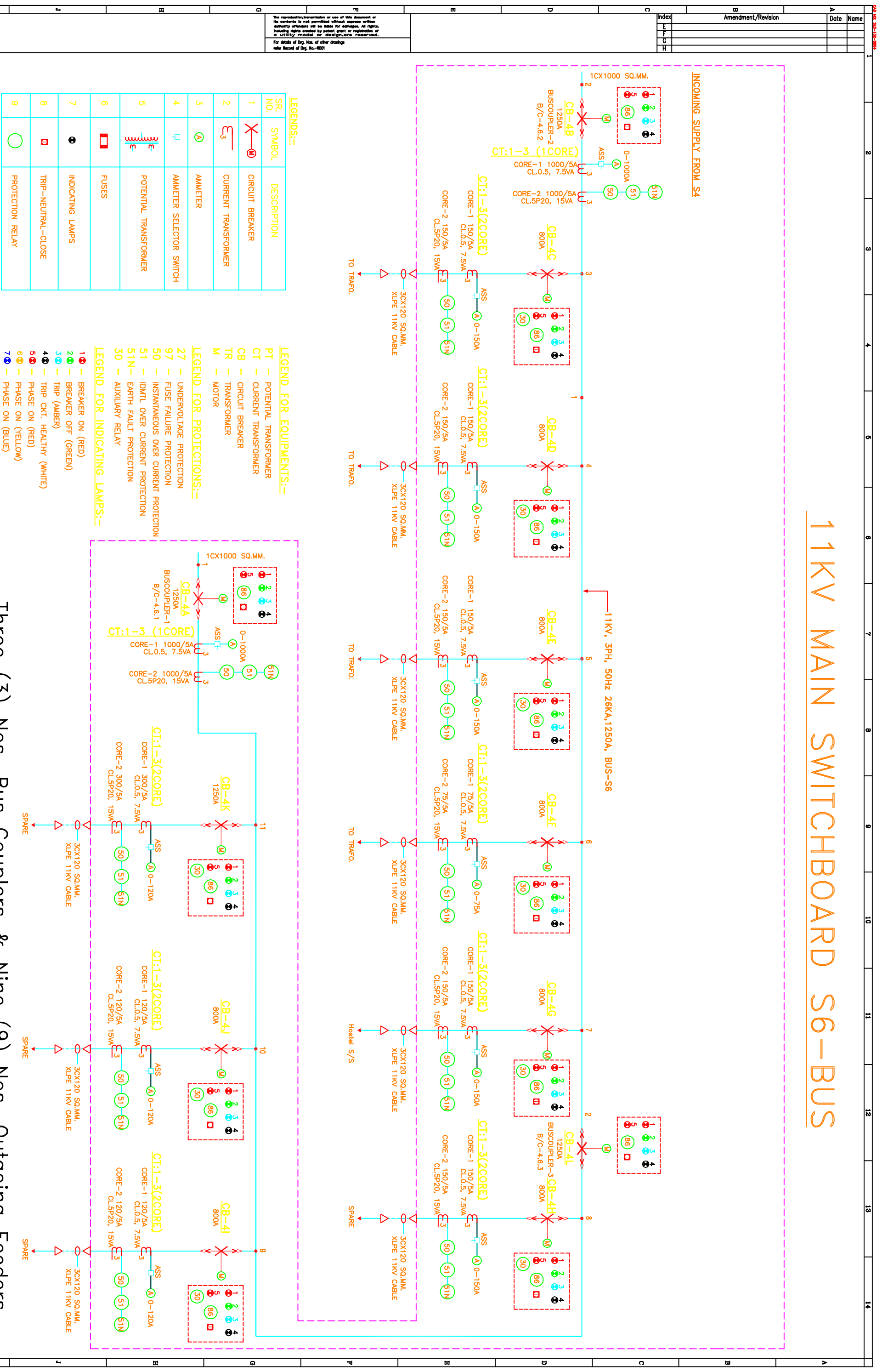
Issue	Date	Issued for	Aprd.

Remarks

Original/ Replacement for / Replaced by :-

Sheet No. 1
No. of Sh. 3

11KV MAIN SWITCHBOARD S6-BUS



LEGENDS:-

S.R. NO.	SYMBOL	DESCRIPTION
1		CIRCUIT BREAKER
2		CURRENT TRANSFORMER
3		AMMETER
4		AMMETER SELECTOR SWITCH
5		POTENTIAL TRANSFORMER
6		FUSES
7		INDICATING LAMPS
8		TRIP-NEUTRAL-CLOSE
9		PROTECTION RELAY

LEGEND FOR EQUIPMENTS:-

PT - POTENTIAL TRANSFORMER
 CT - CURRENT TRANSFORMER
 CB - CIRCUIT BREAKER
 TR - TRANSFORMER
 M - MOTOR

LEGEND FOR PROTECTIONS:-

27 - UNDERVOLTAGE PROTECTION
 97 - FUSE FAILURE PROTECTION
 50 - INSTANTANEOUS OVER CURRENT PROTECTION
 51N - IDMTL OVER CURRENT PROTECTION
 51N - EARTH FAULT PROTECTION
 50 - AUXILIARY RELAY

LEGEND FOR INDICATING LAMPS:-

1 - BREAKER ON (RED)
 2 - BREAKER OFF (GREEN)
 3 - TRIP (AMBER)
 4 - TRIP CKT. HEALTHY (WHITE)
 5 - PHASE ON (RED)
 6 - PHASE ON (YELLOW)
 7 - PHASE ON (BLUE)
 8 - DC SUPPLY ON (RED)

Three (3) Nos. Bus Couplers & Nine (9) Nos. Outgoing Feeders

Client :- **INSTITUTE FOR PLASMA RESEARCH**

Project :-

Description :-

Work :-

IPR Drawing No.:

Item No.:

Scale :-

QTY:-

Sheet No. 3 of 3

Issue 1: 1, 2, 3, 4, 5, 6, 7, 8, 9, 10, 11, 12, 13, 14

Remarks: Issued for Aprd.